

JAWS & T-nuts

For Power Chucks & Scroll Chucks

CNO. S5C-1

Best Support !



Head Quarters, Motoyama factory

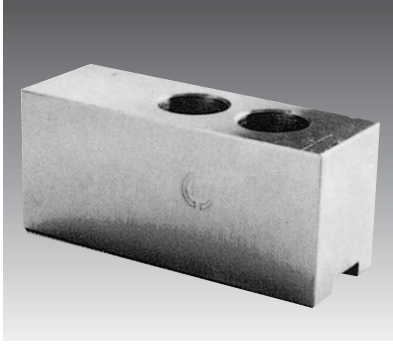


Honesty and Courage
~ Customer first ~

Decade 2011

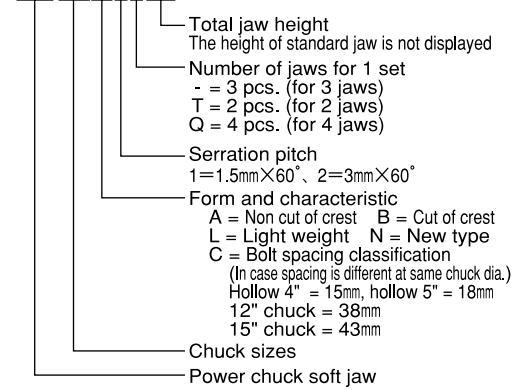
KITAGAWA

SOFT JAWS FOR POWER CHUCK



SB type
KITAGAWA

SB06A1-80



Combination of Soft Jaws

Jaw TYPE	Jaw TYPE	Adaptive solid chuck	Adaptive hollow chuck
Standard jaw	High jaw		
SB04C1	SB04C1-036, SB04C1-048		(B-04, HOB-4)
SB04C1T	SB04C1T048		(BT04, HOBT-4)
SB04B1	SB04A1-036, SB04A1-048	N-04 (HJ-4)、AS04, NL04, NRC04	
SB04A1T	SB04A1T048	NT04, AT04	
SB04N1	SB04N1-036, SB04N1-048		B-204
SB04N1T			BT204
SB05C1	SB05C1-038, SB05C1-053		(B-05, HOB-5)
SB05C1T	SB05C1T053		(BT05, HOBT-5)
SB05B1	SB05A1-038, SB05A1-053	N-05 (HJ-5)	
SB05A1T	SB05A1T053	NT05	
SB05N1	SB05N1-038, SB05N1-053		B-205
SB05N1T			BT205
SB06B1	SB06A1-066	N-06, NL06, AS06, NRC06, (HJA5-6)	BB206, B-06 (HOB-6, HOS-6, HO-6, HOH-06K)
SB06A2	SB06A2-057, SB06A2-077	(HJ-6)	
SB06A1T	SB06A1T066 UVE500L, UVE630L	NT06, NLT06, AT06	(BT06, HOBT-6)
SB06C1		(HT-6)	UVE160K
SB06L1A			BS306, B-206, HOH-206, BL206
SB06L1T			BT206
SB08B1	SB08A1-056, SB08A1-076	N-08, NL08, AS08, NRC08, (HJA6-8)	BB208, BS308, B-208, HOH-208, BL208, B-08 (HOB-8, HOS-8, HO-8, HOH-08K)
SB08B1Q	SB08B1Q-76	HW-08	
SB08A2	SB08A2-077	(HJ-8)	
SB08A1T	SB08A1T056, SB08A1T076	NT08, NLT08, AT08	BT208, (BT08, HOBT-8)
SB10A1		NL10, AS10, NRC10	
SB10B1	SB10A1-056, SB10A1-080, SB10A1-116	N-10, (HJA6-8-10)	BB210, BS310, B-210, BL210, B-10, (HOB-10, HOS-10, HO-10), HOH-10K, UVE200K, UVE250K
SB10A2Q	SB10B2Q080	HW-10, 12	
SB10A2	SB10A2-080	(HJ-10)	
SB10A1T	SB10A1T080	NT10, NLT10, AT10	BT210, (BT10, HOBT-10)
SB12A1	SB12A1-090	N-12, NL12, (HJA6-8-12)	B-12, (HOB-12, HOS-12), HOH-12K
SB12C1			UVE315K, (HO-12)
SB12A2	SB12A2-127	(HJ-12)	
SB12A1T	SB12A1T090	NT12, NLT12	(BT12, HOBT-12)
SB12N1	SB12N1-090		BB212, B-212, BL212
SB12N1T			BT212, BLT212
SB15C1	SB15C1-110		B-15-18, (HOB-15-18, HO-15, HOS-15), HOH-15K
SB15A1	SB15A1-110	(HJA8-15-18-21, HJA11-15)	
SB15A2		(HJ-15)	UVE400K
SB15A2Q		HW-15	
SB15C1T			(BT15, HOBT-15)
SB15N1	SB15N1-110	N-15, N-18	B-215
UVE500AR			(UVE500AR)
SB18A2	SB18A2-110	N-21, N-24, (HJ-18-21, HJA11-18-21)	B-21-24, (HOB-21-24, UVE500K-630K, UVE550AR-630AR, UVE500L, UVE630L, UVE500LB, UVE630LB)
SB24A2	SB24A2-130	(HJA11-24, HJ-24)	(UVE800K, UVE750AR, UVE800LB)
SB06BB	SB06BB-040		QB306, (QB206)
SB08BB	SB08BB-056		QB308, (QB208)
SB10BB	SB10BB-060		QB310, (QB210)
SB12BB	SB12BB-070		QB312, (QB212)
SBPW-06		PW-06	
SBPW-08		PW-08	
SBPW-10		PW-10	
SBPW-12		PW-12	
SBPW-15		PW-15	

Chuck models in parentheses are discontinued models.

Combination Table for Standard Soft Jaws

Chuck	Soft jaw	Chuck	Soft jaw
N-04	SB04B1	BT204	SB04N1T
N-05	SB05B1	BT205	SB05N1T
N-06	SB06B1	BT206	SB06L1T
N-08	SB08B1	BT208	SB08A1T
N-10	SB10B1	BT210	SB10A1T
N-12	SB12A1	BT212	SB12N1T
N-15	SB15N1		
N-18	SB15N1	BL206	SB06L1A
N-21	SB18A2	BL208	SB08B1
N-24	SB18A2	BL210	SB10B1
		BL212	SB12N1
NT-04	SB04A1T		
NT-05	SB05A1T	QB306	SB06BB
NLT-06	SB06A1T	QB308	SB08BB
NLT-08	SB08A1T	QB310	SB10BB
NLT-10	SB10A1T	QB312	SB12BB
NLT-12	SB12A1T		
		UVE160K	SB06C1
NL-04	SB04B1	UVE200K	SB10B1
NL-06	SB06B1	UVE250K	SB10B1
NL-08	SB08B1	UVE315K	SB12C1
NL-10	SB10A1	UVE400K	SB15A2
NL-12	SB12A1	UVE500LB	SB18A2
		UVE500AR	UVE500AR
HJ-06	SB06A2	UVE630LB	SB18A2
HJ-08	SB08A2	UVE630AR	SB18A2
HJ-10	SB10A2	UVE750AR	SB24A2
HJ-12	SB12A2	UVE800LB	SB24A2
B-04	SB04C1	AS04	SB04B1
B-05	SB05C1	AS06	SB06B1
B-06	SB06B1	AS08	SB08B1
B-08	SB08B1	AS10	SB10A1
B-10	SB10B1		
B-12	SB12A1	AT04	SB04A1T
B-15	SB15C1	AT06	SB06A1T
B-18	SB15C1	AT08	SB08A1T
B-21	SB18A2	AT10	SB10A1T
B-24	SB18A2		
		NRC04	SB04B1
BT-04	SB04C1T	NRC06	SB06B1
BT-05	SB05C1T	NRC08	SB08B1
BT-06	SB06A1T	NRC10	SB10B1
BT-08	SB08A1T		
BT-10	SB10A1T	HW-08	SB08B1Q
BT-12	SB12A1T	HW-10	SB10A2Q
BT-15	SB15C1T	HW-12	SB10A2Q
		HW-15	SB15A2Q
B-204	SB04N1		
B-205	SB05N1	HOH206	SB06L1A
B-206	SB06L1A	HOH208	SB08B1
B-208	SB08B1	HOH10K	SB10B1
B-210	SB10B1	HOH12K	SB12A1
B-212	SB12N1	HOH15K	SB15C1
B-215	SB15N1		

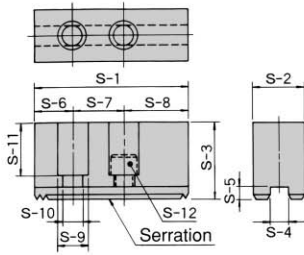
Combination Table for Standard Soft Jaws

Chuck	Soft jaw	Chuck	Soft jaw
BB206	SB06B1	PW-06	SBPW-06
BB208	SB08B1	PW-08	SBPW-08
BB210	SB10B1	PW-10	SBPW-10
BB212	SB12N1	PW-12	SBPW-12
		PW-15	SBPW-15
BS306	SB06L1A		
BS308	SB08B1		
BS310	SB10B1		

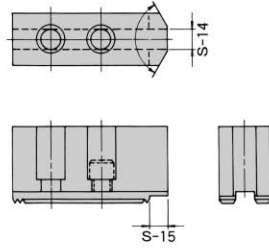
Interchangeable High jaws with standard jaws

Standard jaw	High jaw
SB04C1	SB04C1-036, SB04C1-048
SB04C1T	SB04C1T048
SB04B1	SB04A1-036, SB04A1-048
SB04A1T	SB04C1T048
SB04N1	SB04N1-036, SB04N1-048
SB05C1	SB05C1-038, SB05C1-053
SB05C1T	SB05C1T053
SB05B1	SB05A1-038, SB05A1-053
SB05A1T	SB05A1T053
SB05N1	SB05N1-038, SB05N1-053
SB06B1	SB06A1-066
SB06A2	SB06A2-057, SB06A2-077
SB06A1T	SB06A1T066
SB08B1	SB08A1-056, SB08A1-076
SB08B1Q	SB08B1Q-76
SB08A2	SB08A2-077
SB08A1T	SB08A1T056, SB08A1T076
SB10B1 (A1)	SB10A1-056, SB10A1-080, SB10A1-116
SB10A2Q	SB10A2Q080
SB10A2	SB10A2-080
SB10A1T	SB10A1T080
SB12A1	SB12A1-090
SB12A2	SB12A2-127
SB12A1T	SB12A1T090
SB12N1	SB12N1-090
SB15A1	SB15A1-110
SB15C1	SB15C1-110
SB15N1	SB15N1-110
SB18A2	SB18A2-110
SB24A2	SB24A2-130
SB06BB	SB06BB-040
SB08BB	SB08BB-056
SB10BB	SB10BB-060
SB12BB	SB12BB-070

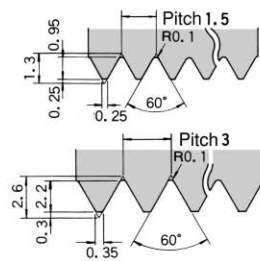
Ref. DWG. 1



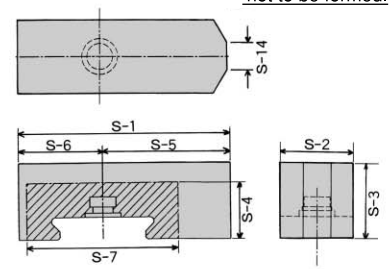
Ref. DWG. 2



Serration



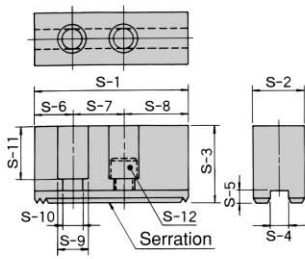
Ref. DWG. 3



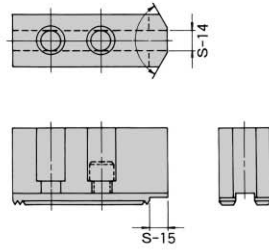
Soft Jaw Dimensions

Soft Jaw TYPE	S-1	S-2	S-3	S-4	S-5	S-6	S-7	S-8	S-9	S-10	S-11	S-12	S-14	S-15	Serration pitch	Ref. DWG
SB04C1	48	19	23	8	3	8	15	25	11	6.6	15	M6X16	6		1.5X60°	2
SB04C1-036	48	19	36	8	3	8	15	25	11	6.6	28	M6X16			1.5X60°	1
SB04C1-048	48	19	48	8	3	8	15	25	11	6.6	40	M6X16			1.5X60°	1
SB04C1T	48	19	23	8	3	8	15	25	11	6.6	15	M6X16			1.5X60°	1
SB04C1T048	48	19	48	8	3	8	15	25	11	6.6	40	M6X16			1.5X60°	1
SB04B1	55	23	25	10	4	13	14	28	13.5	8.5	16	M8X22	3	13	1.5X60°	2
SB04A1-036	55	23	36	10	4	13	14	28	13.5	8.5	27	M8X22			1.5X60°	1
SB04A1-048	55	23	48	10	4	13	14	28	13.5	8.5	39	M8X22			1.5X60°	1
SB04A1T	55	23	25	10	4	13	14	28	13.5	8.5	16	M8X22			1.5X60°	1
SB04A1T048	55	23	48	10	4	13	14	28	13.5	8.5	39	M8X22			1.5X60°	1
SB04N1	49.5	23	23	10	4	10	14	25.5	13.5	8.5	14.5	M8X20	4		1.5X60°	2
SB04N1T	49.5	23	23	10	4	10	14	25.5	13.5	8.5	14.5	M8X20			1.5X60°	1
SB04N1-036	49.5	23	36	10	4	10	14	25.5	13.5	8.5	27.5	M8X20			1.5X60°	1
SB04N1-048	49.5	23	48	10	4	10	14	25.5	13.5	8.5	39.5	M8X20			1.5X60°	1
SB05C1	57	23	31	10	3	10	18	29	13.5	8.5	22	M8X20	12		1.5X60°	2
SB05C1-038	57	23	38	10	3	10	18	29	13.5	8.5	29	M8X20			1.5X60°	1
SB05C1-053	57	23	53	10	3	10	18	29	13.5	8.5	44	M8X20			1.5X60°	1
SB05C1T	57	23	31	10	3	10	18	29	13.5	8.5	22	M8X20			1.5X60°	1
SB05C1T053	57	23	53	10	3	10	18	29	13.5	8.5	44	M8X20		14	1.5X60°	1
SB05B1	62	23	27	10	4	14	19	29	13.5	8.5	18	M8X22	12		1.5X60°	2
SB05A1-038	62	23	38	10	4	14	19	29	13.5	8.5	29	M8X22			1.5X60°	1
SB05A1-053	62	23	53	10	4	14	19	29	13.5	8.5	44	M8X22			1.5X60°	1
SB05A1T	62	23	27	10	4	14	19	29	13.5	8.5	18	M8X22			1.5X60°	1
SB05A1T053	62	23	53	10	4	14	19	29	13.5	8.5	44	M8X22			1.5X60°	1
SB05N1	54	23	25	10	4	12	14	28	13.5	8.5	16.5	M8X20	5		1.5X60°	2
SB05N1T	54	23	25	10	4	12	14	28	13.5	8.5	16.5	M8X20			1.5X60°	1
SB05N1-038	54	23	38	10	4	12	14	28	13.5	8.5	29.5	M8X20		15	1.5X60°	1
SB05N1-053	54	23	53	10	4	12	14	28	13.5	8.5	44.5	M8X20			1.5X60°	1
SB06B1	72	31	32	12	5	15	20	37	17	11	20	M10X30	12		1.5X60°	2
SB06A1-066	72	31	66	12	5	15	20	37	17	11	54	M10X30			1.5X60°	1
SB06A2	75	32	36	12	6	19	20	36	17	11	23	M10X30			3.0X60°	1
SB06A2-057	75	32	57	12	6	19	20	36	17	11	44	M10X30			3.0X60°	1
SB06A2-077	75	32	77	12	6	19	20	36	17	11	64	M10X30			3.0X60°	1
SB06A1T	72	31	32	12	5	15	20	37	17	11	20	M10X30			1.5X60°	1
SB06A1T066	72	31	66	12	5	15	20	37	17	11	54	M10X30		12	1.5X60°	1
SB06C1	76.5	40	37	14	5	15	25	36.5	19	13	22	M12X30			1.5X60°	1
SB06L1A	66	26	28	12	5	12	20	34	17	11	16	M10X25	5	20	1.5X60°	2
SB06L1T	66	26	28	12	5	12	20	34	17	11	16	M10X25			1.5X60°	1
SB08B1	95	35	38	14	5	24	25	46	19	13	23	M12X35	12		1.5X60°	2
SB08A1-056	95	35	56	14	5	24	25	46	19	13	41	M12X35		24	1.5X60°	1
SB08A1-076	95	35	76	14	5	24	25	46	19	13	61	M12X35		24	1.5X60°	1
SB08B1Q	90	31	38	12	5	24	20	46	17	11	26	M10X25	16		1.5X60°	2
SB08B1Q-76	90	31	76	12	5	24	20	46	17	11	64	M10X25	16		1.5X60°	2
SB08A2	95	35	42	14	6	24	25	46	19	13	26	M12X35			3.0X60°	1
SB08A2-077	95	35	77	14	6	24	25	46	19	13	61	M12X35			3.0X60°	1
SB08A1T	95	35	38	14	5	24	25	46	19	13	23	M12X35			1.5X60°	1
SB08A1T056	95	35	56	14	5	24	25	46	19	13	41	M12X35			1.5X60°	1
SB08A1T076	95	35	76	14	5	24	25	46	19	13	61	M12X35			1.5X60°	1

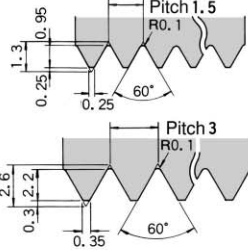
Ref. DWG. 1



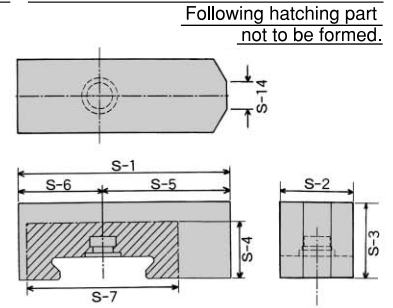
Ref. DWG. 2



Serration



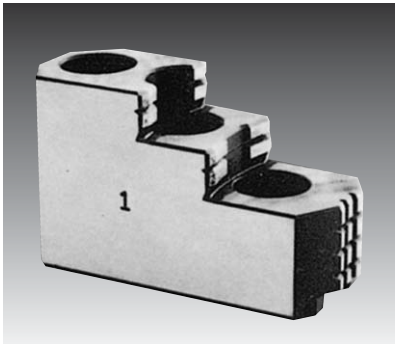
Ref. DWG. 3



Soft Jaw Dimensions

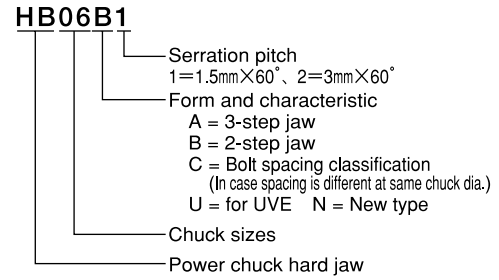
Soft Jaw TYPE	S-1	S-2	S-3	S-4	S-5	S-6	S-7	S-8	S-9	S-10	S-11	M12X35	S-14	S-15	Serration pitch	Ref. DWG.
SB10B1	110	40	42	16	5	30	30	50	19	13	27	M12X35	15	20	1.5X60°	2
SB10A1	110	40	42	16	5	30	30	50	19	13	27	M12X35			1.5X60°	1
SB10A1-056	110	40	56	16	5	30	30	50	19	13	41	M12X35			1.5X60°	1
SB10A1-080	110	40	80	16	5	30	30	50	19	13	65	M12X35			1.5X60°	1
SB10A1-116	110	40	116	16	5	30	30	50	19	13	101	M12X35			1.5X60°	1
SB10A2Q	110	40	42	16	6	30	30	50	19	13	26	M12X35			3.0X60°	1
SB10A2Q080	110	40	80	16	6	30	30	50	19	13	64	M12X35			3.0X60°	1
SB10A2	110	40	42	16	6	30	30	50	19	13	26	M12X35			3.0X60°	1
SB10A2-080	110	40	80	16	6	30	30	50	19	13	65	M12X35			3.0X60°	1
SB10A1T	110	40	42	16	5	30	30	50	19	13	27	M12X35			1.5X60°	1
SB10A1T080	110	40	80	16	5	30	30	50	19	13	65	M12X35			1.5X60°	1
SB12A1	129	50	50	18	5	39	30	60	23	15	30	M14X45			1.5X60°	1
SB12A1-090	129	50	90	18	5	39	30	60	23	15	70	M14X45			1.5X60°	1
SB12C1	129	50	50	18	5	32	38	59	23	15	35	M14X35			1.5X60°	1
SB12A2	129	50	50	18	6	32	38	59	23	15	34	M14X40			3.0X60°	1
SB12A2-127	129	50	127	18	6	32	38	59	23	15	111	M14X40			3.0X60°	1
SB12A1T	129	50	50	18	5	39	30	60	23	15	30	M14X45			1.5X60°	1
SB12A1T090	129	50	90	18	5	39	30	60	23	15	70	M14X45			1.5X60°	1
SB12N1	111	50	50	21	4	21	30	60	25	17	33	M16X40			1.5X60°	1
SB12N1-090	111	50	90	21	4	21	30	60	25	17	73	M16X40			1.5X60°	1
SB12N1T	111	50	50	21	4	21	30	60	25	17	33	M16X40			1.5X60°	1
SB15C1	165	62	66	22	8	37	43	85	32	21	42	M20X60			1.5X60°	
SB15C1-110	165	62	110	22	8	37	43	85	32	21	86	M20X60			1.5X60°	1
SB15A1	156	62	70	22	8	36	60	60	32	21	45	M20X55			1.5X60°	1
SB15A1-110	156	62	110	22	8	36	60	60	32	21	85	M20X55			1.5X60°	1
SB15A2	156	62	70	22	9	36	60	60	32	21	45	M20X55			3.0X60°	1
SB15A2Q	129	50	50	18	6	32	38	59	23	15	34	M14X40			3.0X60°	1
SB5C1T	165	62	66	22	8	37	43	85	32	21	42	M20X60			1.5X60°	1
SB15N1	135	50	60	25.5	5	26	43	66	32	21	39	M20X55			1.5X60°	1
SB15N1-110	135	50	110	25.5	5	26	43	66	32	21	89	M20X55			1.5X60°	1
UVE500AR	210	65	100	25	9	40	60	110	32	21	75	M20X45			3.0X60°	1
SB18A2	180	65	70	25	9	40	60	80	32	21	45	M20X60			3.0X60°	1
SB18A2-110	180	65	110	25	9	40	60	80	32	21	85	M20X45			3.0X60°	1
SB24A2	210	75	90	25	9	40	80	90	32	21	65	M20X65			3.0X60°	1
SB24A2-130	210	75	130	25	9	40	80	90	32	21	105	M20X65			3.0X60°	1
SB06BB	90	32	30	24	54	36	68						5			3
SB06BB-040	90	32	40	24	54	36	68						5			3
SB08BB	106	37	38	28	64	42	76						14			3
SB08BB-056	106	37	56	28	64	42	76						14			3
SB10BB	125	42	42	31	76	49	88						26			3
SB10BB-060	125	42	60	31	76	49	88						26			3
SB12BB	139	42	50	34	90	49	92						30			3
SB12BB-070	139	42	70	34	90	49	92						30			3
SBPW-06	67.5	50.8	51	38.07	3.3	15	29.36	23.14	17	11	42.4	M10X16	8			2
SBPW-08	74	57	57.47	44.45	3.3	15	34.14	24.86	20	13.5	47	M12X20				1
SBPW-10	89.5	70.1	70.2	57.1	3.3	19	44.45	26.05	25	17	59	M16X25				1
SBPW-12	108.5	70.1	70.2	57.1	3.3	19	44.45	45.05	25	17	59	M16X25				1
SBPW-15	140	76.2	76.5	66.62	3.3	23.9	53.98	62.12	32	21	61.2	M20X30				1

HARD JAWS FOR POWER CHUCK



HB type

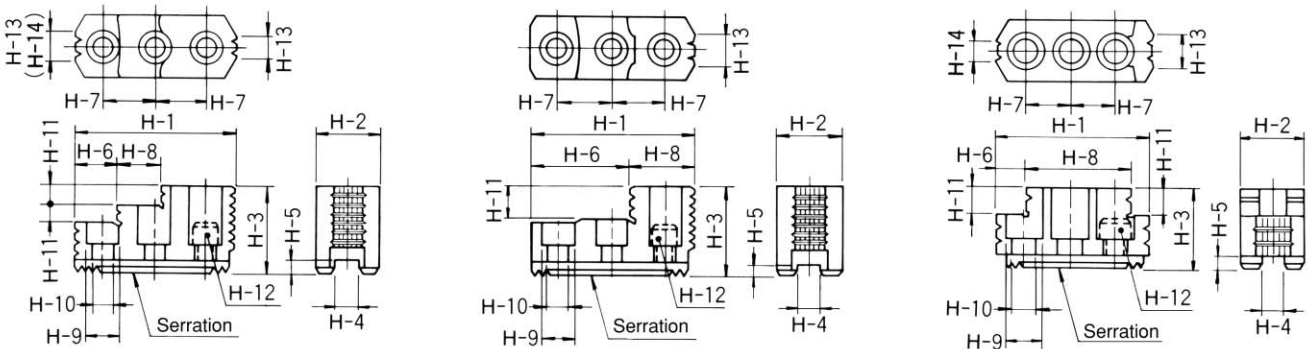
KITAGAWA



Combination of Hard Jaws

Hard Jaw TYPE	Adaptive solid chuck	Adaptive hollow chuck
HB04B1		(B-04)
HB04N1		B-204, B-205
HB05B1		(B-05)
HB05C1	N-05	
HB06B1	N-06, NL06, (HJ-6, HJA5-6)	BB206, BS306, B-206, HOH-206, BL206 B-06, (HOB-6, HOS-6, HO-6)
HB08A1	N-08, NL08, (HJ-8, HJA6-8)	B-208, HOH-208, BL208, B-08, (HOB-8, HOS-8, HO-8)
HB08B1		BB208, BS308
HB10A1	N-10, NL10, (HJ-10, HJA6•8-10)	B-210, HOH-10K, BL210, B-10, (HOB-10, HOS-10, HO-10)
HB10AA1		BB210, BS310
HB12B1	N-12, NL12, (HJA6•8-12, HLA6-12, HLA6•8-15)	HOH-12K, B-12, (HOB-12, HOS-12, HO-12)
HB12C1		(HO-12)
HB12N1		BB212, B-212, BL212
HB15A1		HOH-15K, B-15, (HOB-15, HOS-15, HO-15), B-18, (HOB-18)
HB15B1	(HJA8-15•18•21, HJA11-15, HLA-18•21)	
HB15N1	N-15, N-18	B-215
HB18B2	N-21, N-24 (HJA11-18•21, HJA15-21)	B-21 (HOB-21), B-24 (HOB-24) (UVE500, UVE630)
HB24B2	(HJA11•15-24)	(UVE800)
HB06U1		UVE160
HB08U1		UVE200, UVE250
HB12U1		UVE315
HB16U1		UVE400
HB20U2		(UVE500, UVE630)
HB31U2		(UVE800)

Chuck models in parentheses are discontinued models.



Hard Jaw Dimensions

Hard Jaw TYPE	H-1	H-2	H-3	H-4	H-5	H-6	H-7	H-8	H-9	H-10	H-11	H-12	H-13	H-14	Serration pitch	Ref. DWG.
HB04N1	46	19	23	8	3	15	15	23.5	11	6.6	9	M 6	6	—	1.5	3
HB04N1	53	23	27.5	10	4	30.5	14	22.5	13.5	8.5	10	M 8	6	—	1.5	2
HB05C1	55.5	23	31	10	3	22.5	18	21.5	13.5	8.5	14	M 8	6	—	1.5	3
HB05C1	61	23	30	10	4	7.5	19	53.5	13.5	8.5	12	M 8	6	—	1.5	2
HB06B1	67.5	31	35	12	5	13	20	46	17	11	12	M10	16	10	1.5	3
HB08A1	86	35	51	14	5	31	25	18	19	13	12	M12	12	12	1.5	1
HB08B1	92	35	51	14	5	7	25	68	19	13	18	M12	11	11	1.5	3
HB10A1	99.5	40	54	16	5	43	30	17	19	13	13	M12	15	15	1.5	1
HB10AA1	102.5	40	54	16	5	43	30	17	19	13	13	M12	15	15	1.5	1
HB12B1	97.5	50	55	18	5	64.5	30	33	23	15	20	M14	30	—	1.5	2
HB12C1	113	50	50	18	5	69.5	38	43.5	22	15	20	M14	18	—	1.5	2
HB12N1	103	50	52	21	4	62.5	30	40.5	25	17	17	M16	30	—	1.5	2
HB15A1	149	62	86	22	8	63	43	34	32	21	20	M20	40	40	1.5	1
HB15B1	141.75	70	77.5	22	8	87.75	43	54	32	21	30	M20	50	—	1.5	2
HB15N1	149	62	86	25.5	5	69	43	27	32	21	20	M20	43	38	1.5	1
HB18B2	159.5	80	90	25	9	104.5	50	55	32	21	40	M20	55	—	3.0	2
HB24B2	183.5	90	105	25	9	116.5	60	67	32	21	50	M20	76	—	3.0	2
HB06U1	69.5	35	48	14	5	34	19	18	19	13	12	M12	12	20	1.5	1
HB08U1	79.25	40	42	16	5	35.25	21	44	19	13	14	M12	12	—	1.5	2
HB12U1	107.25	45	50	18	5	56.75	30	50.5	22	15	20	M14	25	—	1.5	2
HB16U2	138.5	60	71	22	9	76.5	43	62	32	21	26	M20	35	—	3.0	2
HB20U2	203	65	80	25	9	153	50	50	32	21	32	M20	55	—	3.0	2
HB31U2	250	75	80	25	9	200	60	50	32	21	28	M20	60	—	3.0	2

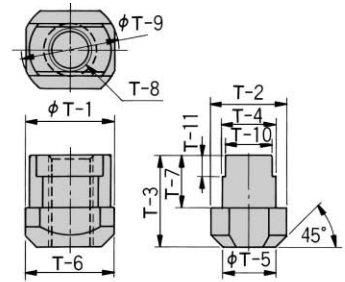


T-nut

KITAGAWA

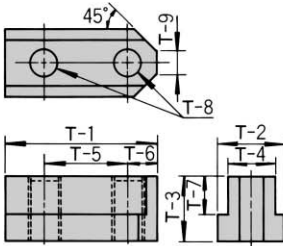
When placing an order, please instruct chuck type and T-nut dimensions.

Ref. DWG. 5



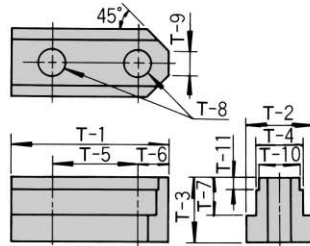
* T-8 is the size of soft jaw mounting bolt.

Ref. DWG. 1



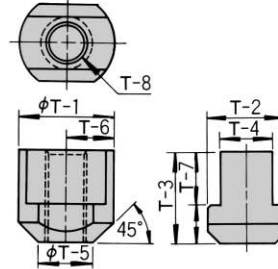
* T-8 is the size of soft jaw mounting bolt.

Ref. DWG. 2



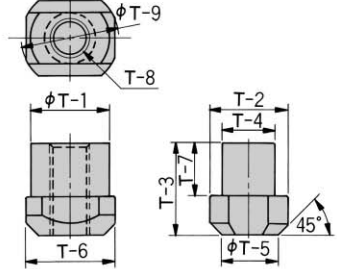
* T-8 is the size of soft jaw mounting bolt.

Ref. DWG. 3



* T-8 is the size of soft jaw mounting bolt.

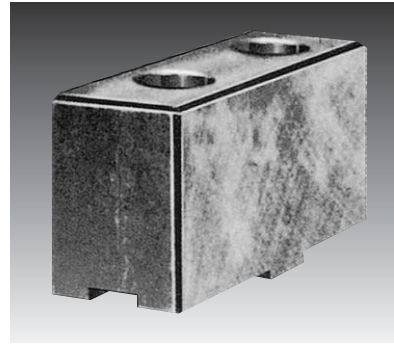
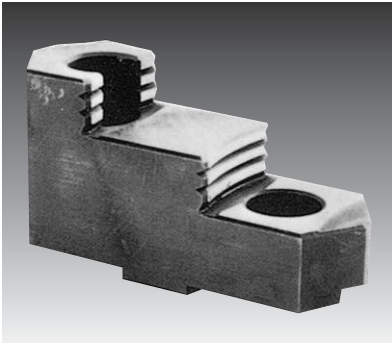
Ref. DWG. 4



* T-8 is the size of soft jaw mounting bolt.

T-1	T-2	T-3	T-4	T-5	T-6	T-7	T-8	T-9	T-10	T-11	Ref. DWG.	Adaptive chuck
24.5	11.5	13.5	8	15	4.5	9	M6	5	—	—	1	(B-04, BT04)
26	14.5	15	10	14	6	9.5	M8	5	—	—	1	B-204, BT204, B-205, BT205
28	15	18	10	14	7	12.5	M8	5	—	—	1	N-04, NT04, NL04, AS04, AT04, NRC04, (HJ-4)
30	14	15.5	10	18	6	10	M8	5	—	—	1	(B-05, BT05, HOB-5, HOBT-5)
32	15	18	10	19	6	12.5	M8	6	—	—	1	N-05, NT05, (HJ-5)
36.5	17	18.5	12	20	8.25	11	M10	8	—	—	1	BB206
36	17.5	18.5	12	20	8.25	11	M10	8	—	—	1	HW-08
36.5	17.5	22.5	12	20	7.5	15	M10	6	—	—	1	N-06, (NT06, HJ-6), NL06, NLT06, AS06, AT06, NRC06
46.5	20.5	20.5	14	25	10.5	12	M12	12	—	—	1	BB208, BS308, B-208, BT208, HOH-208, BL208, BLT208
48	20.5	25.5	14	25	11	16	M12	8	—	—	1	N-08, (NT08, HJ-8), NL08, NLT08, AS08, AT08, NRC08
51	22.5	21.5	16	30	11	13	M12	11	—	—	1	BB210, BS310, B-210, BT210, BL210, BLT210
55	22.5	25.5	16	30	11	16	M12	8	—	—	1	N-10, (NT10, HJ-10), NL10, NLT10, AS10, AT10, NRC10, HW-10, HW-12
58.75	29.5	22.75	21	30	14.5	11.25	M16	11	—	—	1	BB212
55.5	29.5	27.75	21	30	12	16.25	M16	13	—	—	1	B-212, BT212, BL212, BLT212
55.5	26.5	31	18	30	11.5	17.5	M14	12	—	—	1	HOH-12K
55.5	26.5	33.5	18	30	11.5	20	M14	12	—	—	1	N-12, (NT12), NL12, NLT12
62.5	26.5	33.5	18	38	12	20	M14	12	—	—	1	HW-15, (HJ-12)
90	37.5	45	25	50	20	26	M20	16	—	—	1	B-21·24, (HOB-21·24) For hard jaw
100	37.5	45	25	60	20	26	M20	16	—	—	1	B-21·24, (HOB-21·24) For soft jaw
100	37.5	54	25	60	20	35	M20	16	—	—	1	(HJ-18, HJ-21)
100	40	54	25	60	20	35	M20	16	—	—	1	(HJA11-24 For hard jaw)
120	40	54	25	80	20	35	M20	16	—	—	1	(HJ-24, HJA11·15-24)
80	33.5	40.5	24	43	17	24	M20	11	22	7.5	2	HOH-15K
80	33.5	45.5	24	43	17	29	M20	11	22	7.5	2	(HLA8-18, HJA11-15)
97	33.5	45.5	24	60	17	29	M20	11	22	8.5	2	(HJ-15, HJA8·11-15, HLA8-18·21)
80	35	39.25	25.5	43	17	20.25	M20	14	—	—	1	B-215
42	35	39.25	25.5	25	—	20.25	M20	—	—	—	3	N-15, N-18
46	37.5	45	25	26.5	—	26	M20	—	—	—	3	N-21, N-24
19	22.5	23.5	14	19.5	19	15	M12	24.5	—	—	4	UVE160
19	22.5	24	16	19.5	19	15.5	M12	24.5	—	—	4	UVE200, UVE250
24	28.5	27.5	18	24	24	17	M14	32	—	—	4	UVE315
32	36	30.5	24	30	32	20	M20	40	22	8.5	5	UVE400
100	36	31.5	25	60	20	21	M20	16	—	—	1	(UVE500LB, UVE630LB)
120	36	31.5	25	80	20	21	M20	16	—	—	1	(UVE800LB)
32	36	31.5	25	30	32	21	M20	40	—	—	4	(UVE500AR)
32	37.5	45.5	25	30	34	26	M20	42	—	—	4	(UVE550AR, UVE630AR, UVE750AR)
46	19.8	10.7	12.65	29.36	8.5	6	M10	—	—	—	1	PW-06
53.2	21.6	12.9	14.24	34.14	9.5	7.4	M12	—	—	—	1	PW-08
68.45	27.4	17	19	44.45	12	10	M16	—	—	—	1	PW-10, PW-12

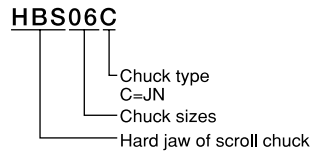
Chuck models in parentheses are discontinued models.



HARD JAWS FOR SCROLL CHUCK

HBS type

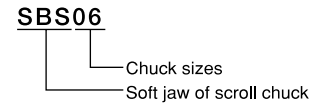
KITAGAWA



SOFT JAWS FOR SCROLL CHUCK

SBS type

KITAGAWA

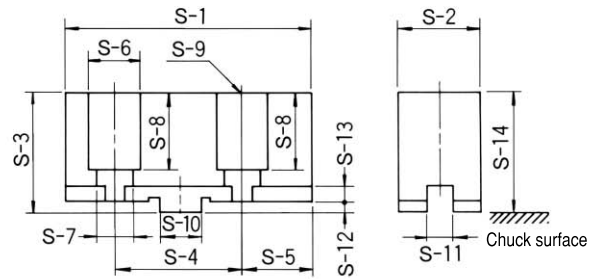
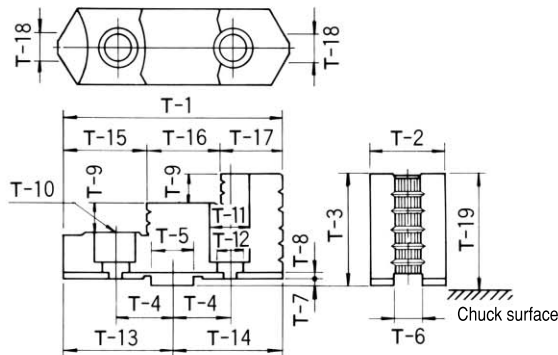


Combination Table for Hard Jaws

Hard jaw type	JN..T, JN..RA type
HBS06C	JN06T, JN06RA5
HBS07C	JN07T, JN07RA5, JN08RA6
HBS09C	JN09T, JN09RA6
HBS10C	JN10T, JN10RA6 (8)
HBS12C	JN12T, JN12RA6 (8)

Combination Table for Soft Jaws

Soft jaw type	JN..T, JN..RA type	Old chuck type
SBS06	JN06T, JN06RA5	SK-6, KA5-165, KA5C-6
SBS07	JN07T, JN07RA5, JN08RA6, JT07	SK-7, KA6-190, KA6C-200, KA6C-8
SBS09	JN09T, JN09RA6, JT09	SK-9, KA6-230
SBS10	JN10T, JN10RA6 (8)	SK-10, KA6 (8) -270, KA6 (8) C-10
SBS12	JN12T, JN12RA6 (8)	SK-12, KA6 (8) -310, KA6 (8) C-12



Hard Jaw Dimensions

Hard Jaw TYPE	T-1	T-2	T-3	T-4	T-5	T-6	T-7	T-8	T-9	T-10
HBS06C	68	26	37	19.05	12.68	7.94	3	3.5	8.5	M 8
HBS07C	80	28	40	22.225	12.68	7.94	3	3.5	9.5	M10
HBS09C	90	32	48	26.99	19.03	12.7	3	3.5	12	M12
HBS10C	100	35	52	26.99	19.03	12.7	3	3.5	14	M12
HBS12C	115	40	54	31.75	19.03	12.7	3	3.5	15	M12

Hard Jaw TYPE	T-11	T-12	T-13	T-14	T-15	T-16	T-17	T-18	T-19
HBS06C	14	8.5	34	34	26	21.5	20.5	2	39
HBS07C	17	11	40	40	30.5	26	23.5	2	42
HBS09C	19	13	45	45	34	30	26	3	50
HBS10C	19	13	50	50	38	32	30	3	54
HBS12C	19	13	57.5	57.5	46	35	34	4	56

Soft Jaw Dimensions

Soft Jaw TYPE	S-1	S-2	S-3	S-4	S-5	S-6	S-7
SBS06	75	26	38	38.1	21.95	14	8.5
SBS07	88	28	41	44.45	25.775	17	11
SBS09	100	32	48	53.98	28.01	19	13
SBS10	110	35	52	53.98	33.01	19	13
SBS12	125	40	54	63.5	35.75	19	13

Soft Jaw TYPE	S-8	S-9	S-10	S-11	S-12	S-13	S-14
SBS06	27	M 8	12.68	7.94	3	3.5	40
SBS07	30.5	M10	12.68	7.94	3	3.5	43
SBS09	34.5	M12	19.03	12.7	3	3.5	50
SBS10	38.5	M12	19.03	12.7	3	3.5	54
SBS12	40.5	M12	19.03	12.7	3	3.5	56

KITAGAWA

KITAGAWA IRON WORKS CO., LTD.
 - Machine Tools & Accessories Division -

77-1 Motomachi, Fuchu-shi, Hiroshima-pref. Japan 726-8610
 TEL +81 847-40-0526 FAX +81 847-45-8911

Kitagawa Home Page You can always access the latest KITAGAWA information on the internet.

[http:// www.kiw.co.jp /](http://www.kiw.co.jp/)

Catalog contents as of 2005.09

Printed in Japan 3,000